



**Water Monitoring Result at M5B - Central Cooling Water Intake Group
Mid-Flood Tide**

Date	Time	Weather Condition	Sampling Depth		Water Temperature		pH		Salinity		DO Saturation		DO		Turbidity		Suspended Solids							
			m		°C		-		ppt		%		mg/L		NTU		mg/L							
					Value	Average	Value	Average	Value	Average	Value	Average	Value	Average	Value	Average	Value	Average						
01/02/2019	13:55	Cloudy	Middle	4.0	18.60	18.60	18.65	7.46	7.46	7.48	31.96	31.96	31.96	104.7	104.6	104.7	8.09	8.07	8.07	2.70	2.69	2.69	3	3.00
	13:57		Middle	4.0	18.70	18.70		7.50	7.50		31.96	31.96		104.6	104.7		8.06	8.07		2.67	2.68		3	
04/02/2019	06:04	Foggy	Middle	3.0	19.90	19.90	19.90	8.34	8.34	8.34	30.67	30.67	30.67	91.7	92.0	91.1	6.98	6.99	6.93	3.49	3.96	3.66	3	2.50
	06:05		Middle	3.0	19.90	19.90		8.34	8.34		30.67	30.67		91.7	89.1		6.97	6.78		3.61	3.56		2	
08/02/2019	10:55	Fine	Middle	4.0	21.00	21.00	21.05	7.83	7.83	7.85	31.30	31.30	31.31	100.5	100.4	100.1	7.45	7.44	7.41	1.59	1.60	1.60	4	3.50
	10:57		Middle	4.0	21.10	21.10		7.86	7.86		31.31	31.31		100.0	99.5		7.40	7.36		1.60	1.61		3	
11/02/2019	10:10	Cloudy	Middle	4.0	19.10	19.10	19.10	7.84	7.84	7.85	32.25	32.25	32.25	98.3	98.7	98.8	7.51	7.56	7.55	1.90	1.93	1.86	3	3.00
	10:12		Middle	4.0	19.10	19.10		7.86	7.86		32.25	32.25		98.9	99.1		7.55	7.56		1.80	1.82		3	
13/02/2019	11:35	Fine	Middle	4.0	19.80	19.80	19.80	7.94	7.94	7.95	32.44	32.44	32.44	100.8	100.7	100.2	7.58	7.57	7.53	2.63	2.66	2.64	<2	<2
	11:37		Middle	4.0	19.80	19.80		7.95	7.95		32.43	32.43		99.4	99.9		7.47	7.51		2.61	2.65		<2	
15/02/2019	11:35	Fine	Middle	4.0	19.80	19.80	19.80	7.94	7.94	7.95	32.44	32.44	32.44	100.8	100.7	100.2	7.58	7.57	7.53	2.63	2.66	2.64	2	2.00
	11:37		Middle	4.0	19.80	19.80		7.95	7.95		32.43	32.43		99.4	99.9		7.47	7.51		2.61	2.65		<2	
18/02/2019	16:05	Cloudy	Middle	4.0	19.20	19.20	19.20	7.90	7.90	7.92	32.83	32.83	32.83	98.6	98.7	98.5	7.49	7.50	7.49	2.59	2.63	2.64	2	2.00
	16:07		Middle	4.0	19.20	19.20		7.93	7.93		32.83	32.83		98.5	98.2		7.48	7.47		2.67	2.66		2	
20/02/2019	14:05	Fine	Middle	4.0	21.70	21.70	21.80	8.00	8.00	8.04	32.59	32.59	32.59	96.2	96.3	96.0	6.96	6.97	6.95	1.78	1.79	1.79	3	3.00
	14:07		Middle	4.0	21.90	21.90		8.07	8.07		32.59	32.59		95.7	95.9		6.93	6.95		1.79	1.78		3	
22/02/2019	08:05	Fine	Middle	4.0	20.10	20.10	20.10	7.96	7.96	7.99	31.78	31.78	31.78	123.7	123.8	123.8	9.31	9.31	9.31	3.12	3.13	3.12	3	3.00
	08:07		Middle	4.0	20.10	20.10		8.01	8.01		31.78	31.78		123.9	123.7		9.32	9.30		3.14	3.09		3	
25/02/2019	10:00	Cloudy	Middle	4.0	19.80	19.80	19.80	7.38	7.38	7.38	31.11	31.11	31.11	114.9	114.2	113.6	8.74	8.68	8.64	4.26	4.25	4.25	3	3.50
	10:02		Middle	4.0	19.80	19.80		7.37	7.37		31.11	31.11		112.6	112.7		8.56	8.57		4.24	4.26		4	
27/02/2019	11:50	Fine	Middle	4.0	20.90	20.90	20.90	7.72	7.72	7.73	32.87	32.87	32.88	111.5	110.9	110.6	8.19	8.16	8.38	1.60	1.60	1.61	5	4.50
	11:52		Middle	4.0	20.90	20.90		7.73	7.73		32.88	32.88		110.1	109.8		8.09	9.07		1.60	1.63		4	

Remarks:
Single underline denotes exceedance over Action Level.
Double underline denotes exceedance over Limit Level.



**Water Monitoring Result at Culvert J - Reference Station
Mid-Flood Tide**

Date	Time	Weather Condition	Sampling Depth		Water Temperature		pH		Salinity		DO Saturation		DO		Turbidity		Suspended Solids							
			m		°C		-		ppt		%		mg/L		NTU		mg/L							
					Value	Average	Value	Average	Value	Average	Value	Average	Value	Average	Value	Average	Value	Average						
01/02/2019	13:50	Cloudy	Middle	3.5	18.90	18.90	18.90	7.29	7.29	7.35	31.89	31.89	31.89	111.7	111.5	110.8	8.58	8.57	8.51	2.72	2.75	2.72	3	3.00
	13:52		Middle	3.5	18.90	18.90		7.40	7.40		31.89	31.89		110.0	109.8		8.45	8.44		2.70	2.70		3	
04/02/2019	06:12	Foggy	Middle	2.5	19.90	19.90	19.90	8.38	8.38	8.38	30.44	30.44	30.44	88.7	87.3	88.6	6.75	6.64	6.74	4.43	4.24	4.31	3	3.00
	06:13		Middle	2.5	19.90	19.90		8.38	8.38		30.44	30.44		88.5	89.8		6.74	6.83		4.27	4.30		<2	
08/02/2019	10:50	Fine	Middle	3.5	21.50	21.50	21.55	7.77	7.77	7.78	30.93	30.93	30.93	105.5	105.1	104.1	7.75	7.74	7.65	2.29	2.32	2.32	4	3.50
	10:52		Middle	3.5	21.60	21.60		7.79	7.79		30.93	30.93		103.4	102.5		7.59	7.53		2.31	2.35		3	
11/02/2019	10:05	Cloudy	Middle	3.5	19.20	19.20	19.25	7.76	7.76	7.78	32.05	32.05	32.05	103.8	103.2	102.6	7.92	7.88	7.83	2.23	2.24	2.24	2	2.00
	10:07		Middle	3.5	19.30	19.30		7.79	7.79		32.05	32.05		101.7	101.6		7.75	7.76		2.24	2.23		2	
13/02/2019	11:30	Fine	Middle	4.0	20.20	20.20	20.25	7.92	7.92	7.92	31.45	31.45	31.46	101.1	100.8	100.4	7.60	7.58	7.54	2.80	2.80	2.81	2	2.50
	11:32		Middle	4.0	20.30	20.30		7.92	7.92		31.46	31.46		100.0	99.5		7.50	7.47		2.81	2.81		3	
15/02/2019	11:30	Fine	Middle	4.0	20.20	20.20	20.25	7.92	7.92	7.92	31.45	31.45	31.46	101.1	100.8	100.4	7.60	7.58	7.54	2.80	2.80	2.81	<2	<2
	11:32		Middle	4.0	20.30	20.30		7.92	7.92		31.46	31.46		100.0	99.5		7.50	7.47		2.81	2.81		<2	
18/02/2019	16:00	Cloudy	Middle	3.5	19.10	19.10	19.10	7.73	7.73	7.78	31.22	31.22	31.22	103.9	103.2	102.4	7.99	7.94	7.88	4.94	4.96	4.93	6	5.50
	16:02		Middle	3.5	19.10	19.10		7.83	7.83		31.22	31.22		101.5	101.1		7.81	7.78		4.90	4.92		5	
20/02/2019	14:00	Fine	Middle	3.5	22.50	22.50	22.55	7.85	7.85	7.88	32.57	32.57	32.58	102.3	102.4	101.2	7.33	7.33	7.24	1.81	1.87	1.85	2	2.00
	14:02		Middle	3.5	22.60	22.60		7.91	7.91		32.58	32.58		100.0	100.1		7.15	7.15		1.82	1.88		2	
22/02/2019	08:00	Fine	Middle	3.5	20.50	20.50	20.50	7.82	7.82	7.86	31.62	31.62	31.62	120.3	119.8	119.5	9.00	8.96	8.93	3.94	3.88	3.89	3	3.50
	08:02		Middle	3.5	20.50	20.50		7.89	7.89		31.61	31.61		119.4	118.4		8.92	8.85		3.86	3.88		4	
25/02/2019	10:05	Cloudy	Middle	3.5	19.50	19.50	19.50	7.43	7.43	7.45	31.52	31.52	31.53	111.6	111.9	111.4	8.47	8.50	8.46	2.48	2.43	2.43	3	2.50
	10:07		Middle	3.5	19.50	19.50		7.47	7.47		31.53	31.53		111.0	111.1		8.43	8.43		2.42	2.40		2	
27/02/2019	11:45	Fine	Middle	3.5	21.10	21.10	21.15	7.65	7.65	7.67	31.87	31.87	32.37	106.2	107.1	107.1	7.79	7.85	7.84	1.57	1.58	1.58	3	2.50
	11:47		Middle	3.5	21.20	21.20		7.69	7.69		32.87	32.87		107.4	107.5		7.85	7.86		1.59	1.59		2	

Remarks:
Single underline denotes exceedance over Action Level.
Double underline denotes exceedance over Limit Level.



**Water Monitoring Result at M5B - Central Colling Water Intake Group
Mid-Ebb Tide**

Date	Time	Weather Condition	Sampling Depth		Water Temperature			pH			Salinity		DO Saturation		DO		Turbidity		Suspended Solids					
					°C			-			ppt		%		mg/L		NTU		mg/L					
					Value	Average		Value	Average		Value	Average	Value	Average	Value	Average	Value	Average	Value	Average				
01/02/2019	22:25	Cloudy	Middle	3.5	18.10	18.10	18.10	8.42	8.42	8.42	31.05	31.05	31.05	97.5	95.8	95.1	7.65	7.49	7.46	3.33	3.31	3.17	4	4.00
	22:26		Middle	3.5	18.10	18.10		8.42	8.42		31.05	31.05		93.8	93.4		7.36	7.33		3.10	2.92		4	
04/02/2019	00:17	Cloudy	Middle	3.5	19.80	19.80	19.80	8.36	8.36	8.36	30.67	30.67	30.67	90.8	91.6	90.2	6.92	6.98	6.87	1.27	1.19	1.28	<2	<2
	00:18		Middle	3.5	19.80	19.80		8.36	8.36		30.67	30.67		89.7	88.7		6.83	6.75		1.41	1.25		<2	
08/02/2019	02:53	Misty	Middle	3.0	20.50	20.50	20.50	8.23	8.23	8.23	30.35	30.35	30.35	96.3	97.1	96.4	7.25	7.30	7.25	1.92	1.90	1.88	<2	<2
	02:54		Middle	3.0	20.50	20.50		8.23	8.23		30.35	30.35		96.7	95.5		7.28	7.18		1.86	1.83		<2	
11/02/2019	15:20	Cloudy	Middle	4.0	19.20	19.20	19.20	8.01	8.01	8.02	32.32	32.32	32.33	98.3	98.4	98.5	7.49	7.50	7.50	1.14	1.15	1.16	<2	<2
	15:22		Middle	4.0	19.20	19.20		8.02	8.02		32.33	32.33		98.9	98.2		7.54	7.48		1.16	1.17		<2	
13/02/2019	20:17	Fine	Middle	3.0	18.70	18.70	18.70	8.31	8.31	8.31	31.38	31.38	31.38	88.8	88.5	89.0	6.75	6.73	6.76	1.51	1.48	1.52	<2	<2
	20:18		Middle	3.0	18.70	18.70		8.31	8.31		31.38	31.38		89.4	89.1		6.80	6.77		1.47	1.63		<2	
15/02/2019	20:05	Fine	Middle	3.5	20.00	20.00	20.05	8.09	8.09	8.10	32.99	32.99	32.50	101.7	101.2	101.3	7.60	7.57	7.57	1.47	1.46	1.44	2	2.00
	20:07		Middle	3.5	20.10	20.10		8.11	8.11		32.00	32.00		101.2	101.0		7.56	7.55		1.44	1.40		<2	
18/02/2019	22:35	Cloudy	Middle	4.0	19.30	19.30	19.35	8.04	8.04	8.05	33.02	33.02	33.02	100.5	100.4	100.1	7.61	7.60	7.58	1.68	1.69	1.71	<2	<2
	22:37		Middle	4.0	19.40	19.40		8.05	8.05		33.02	33.02		99.9	99.7		7.56	7.55		1.72	1.74		<2	
20/02/2019	16:30	Cloudy	Middle	4.0	21.30	21.30	21.35	7.94	7.94	7.96	32.22	32.22	32.22	101.5	101.5	101.0	7.44	7.44	7.39	2.44	2.48	2.47	2	2.50
	16:32		Middle	4.0	21.40	21.40		7.97	7.97		32.22	32.22		100.3	100.5		7.34	7.35		2.48	2.47		3	
22/02/2019	15:20	Fine	Middle	3.5	21.60	21.60	21.60	8.07	8.07	8.08	32.07	32.07	32.07	121.6	122.3	121.8	8.90	8.94	8.90	3.38	3.38	3.38	4	3.50
	15:22		Middle	3.5	21.60	21.60		8.09	8.09		32.07	32.07		121.8	121.3		8.90	8.86		3.38	3.39		3	
25/02/2019	17:20	Cloudy	Middle	3.5	19.50	19.50	19.50	7.66	7.66	7.67	32.42	32.42	32.42	112.9	113.1	112.7	8.55	8.53	7.78	3.04	3.17	3.12	4	4.00
	17:22		Middle	3.5	19.50	19.50		7.67	7.67		32.42	32.42		112.4	112.2		8.52	8.50		3.17	3.11		4	
27/02/2019	20:52	Cloudy	Middle	3.5	20.50	20.50	20.50	8.23	8.23	8.23	31.71	31.71	31.71	90.6	90.8	90.7	6.77	6.78	6.77	2.70	2.49	2.56	4	3.50
	20:53		Middle	3.5	20.50	20.50		8.23	8.23		31.71	31.71		91.1	90.2		6.80	6.74		2.40	2.63		3	

Remarks:
 Single underline denotes exceedance over Action Level.
 Double underline denotes exceedance over Limit Level.



**Water Monitoring Result at Culvert J - Reference Station
Mid-Ebb Tide**

Date	Time	Weather Condition	Sampling Depth		Water Temperature			pH			Salinity		DO Saturation		DO		Turbidity		Suspended Solids					
					°C			-			ppt		%		mg/L		NTU		mg/L					
					Value	Average		Value	Average		Value	Average	Value	Average	Value	Average	Value	Average	Value	Average				
01/02/2019	22:32	Cloudy	Middle	3	18.10	18.10	18.10	8.45	8.45	8.45	31.03	31.03	31.03	97.1	95.8	94.8	7.61	7.51	7.43	3.30	3.94	3.64	2	2.00
	22:33		Middle	3	18.10	18.10		8.45	8.45	8.45	31.03	31.03		93.7	92.6		7.35	7.26		3.76	3.57		<2	
04/02/2019	00:24	Cloudy	Middle	3	19.80	19.80	19.80	8.38	8.38	8.38	30.46	30.46	30.46	87.2	88.6	89.0	6.65	6.75	6.78	2.19	2.30	2.14	3	3.00
	00:25		Middle	3	19.80	19.80		8.38	8.38	8.38	30.46	30.46		88.8	91.2		6.77	6.95		2.02	2.06		<2	
08/02/2019	03:01	Misty	Middle	3	20.40	20.40	20.40	8.25	8.25	8.25	30.32	30.32	30.32	94.0	94.5	93.5	7.09	7.13	7.05	1.20	1.56	1.44	3	2.50
	03:02		Middle	3	20.40	20.40		8.25	8.25	8.25	30.32	30.32		93.1	92.2		7.02	6.95		1.53	1.45		2	
11/02/2019	15:15	Cloudy	Middle	4	19.30	19.30	19.35	7.99	7.99	8.00	32.09	32.09	32.09	97.5	97.6	97.4	7.44	7.44	7.43	1.37	1.37	1.38	<2	2.00
	15:17		Middle	4	19.40	19.40		8.00	8.00	8.00	32.09	32.09		97.2	97.3		7.42	7.42		1.38	1.38		2	
13/02/2019	20:24	Fine	Middle	3	18.80	18.80	18.80	8.36	8.36	8.36	31.02	31.02	31.02	82.0	82.7	83.2	6.23	6.29	6.33	1.54	1.56	1.47	<2	<2
	20:25		Middle	3	18.80	18.80		8.36	8.36	8.36	31.02	31.02		83.9	84.1		6.38	6.40		1.37	1.42		<2	
15/02/2019	20:00	Fine	Middle	4	20.60	20.60	20.65	8.00	8.00	8.02	32.17	32.17	32.18	101.4	101.7	101.8	7.61	7.63	7.60	1.70	1.71	1.66	2	2.00
	20:02		Middle	4	20.70	20.70		8.03	8.03	8.02	32.18	32.18		101.8	102.4		7.55	7.60		1.61	1.60		<2	
18/02/2019	22:30	Cloudy	Middle	4	19.50	19.50	19.50	7.99	7.99	7.99	32.87	32.87	32.87	106.3	106.0	105.0	8.04	8.00	7.93	1.91	1.91	1.92	<2	<2
	22:32		Middle	4	19.50	19.50		7.99	7.99	7.99	32.87	32.87		103.9	103.7		7.85	7.84		1.92	1.93		<2	
20/02/2019	16:25	Cloudy	Middle	4	22.10	22.10	22.20	7.92	7.92	7.92	32.28	32.23	32.26	104.8	105.3	104.4	7.56	7.59	7.52	3.60	3.60	3.60	2	2.50
	16:27		Middle	4	22.30	22.30		7.92	7.92	7.92	32.27	32.27		103.8	103.8		7.47	7.47		3.60	3.61		3	
22/02/2019	15:15	Fine	Middle	4	22.10	22.10	22.15	7.90	7.90	7.93	31.95	31.95	31.95	128.1	128.3	126.9	9.27	9.29	9.18	31.38	31.38	31.37	2	2.50
	15:17		Middle	4	22.20	22.20		7.95	7.95	7.93	31.95	31.95		125.7	125.3		9.09	9.06		9.18	31.37		31.36	
25/02/2019	17:15	Cloudy	Middle	4	19.70	19.70	19.70	7.60	7.60	7.61	31.68	31.68	31.68	118.1	117.5	116.5	8.95	8.90	8.82	2.60	2.62	2.64	3	3.50
	17:17		Middle	4	19.70	19.70		7.62	7.62	7.61	31.68	31.68		114.7	115.5		8.69	8.75		8.82	2.67		2.68	
27/02/2019	20:31	Cloudy	Middle	3	20.40	20.40	20.45	8.36	8.36	8.36	30.41	30.41	30.41	90.0	90.2	90.2	6.78	6.79	6.80	4.30	4.38	4.40	5	4.50
	20:32		Middle	3	20.50	20.50		8.36	8.36	8.36	30.42	30.41		90.4	90.3		6.81	6.80		6.80	4.49		4.42	

Remarks:
Single underline denotes exceedance over Action Level.
Double underline denotes exceedance over Limit Level.



**Water Monitoring Result at M5B - Central Cooling Water Intake Group
Mid-Flood Tide**

Date	Time	Weather Condition	Sampling Depth		Water Temperature		pH		Salinity		DO Saturation		DO		Turbidity		Suspended Solids							
					°C		-		ppt		%		mg/L		NTU		mg/L							
			m	Value	Average	Value	Average	Value	Average	Value	Average	Value	Average	Value	Average	Value	Average	Value	Average					
01/03/2019	13:35	Cloudy	Middle	4.0	20.40	20.40	20.50	7.88	7.88	7.89	32.95	32.95	32.94	107.2	106.9	106.8	7.94	7.93	7.92	1.53	1.50	1.50	2	2.00
	13:37		Middle	4.0	20.60	20.60		7.90	7.90		32.93	32.92		106.2	107.0		7.89	7.93		1.48	1.47		<2	
04/03/2019	17:20	Cloudy	Middle	4.0	21.30	21.30	21.35	7.89	7.89	7.90	31.31	31.31	31.33	104.8	104.8	105.2	7.69	7.69	7.72	3.08	3.06	3.06	4	4.50
	17:22		Middle	4.0	21.40	21.40		7.90	7.90		31.34	31.34		105.4	105.6		7.74	7.75		3.05	3.05		5	
06/03/2019	16:35	Cloudy	Middle	4.0	20.40	20.40	20.40	7.72	7.72	7.74	32.39	32.39	32.39	96.8	96.7	96.3	7.21	7.21	7.18	2.24	2.24	2.25	4	4.00
	16:37		Middle	4.0	20.40	20.40		7.75	7.75		32.38	32.38		95.5	96.3		7.12	7.18		2.25	2.26		4	
08/03/2019	20:08	Cloudy	Middle	3.0	18.70	18.70	18.70	8.49	8.49	8.49	31.46	31.46	31.46	90.2	91.2	91.2	6.98	7.08	7.06	3.74	3.69	3.74	<2	2.00
	20:09		Middle	3.0	18.70	18.70		8.49	8.49		31.46	31.46		91.5	91.7		7.09	7.10		3.76	3.78		2	
11/03/2019	09:55	Cloudy	Middle	4.0	18.90	18.90	18.90	7.07	7.07	7.07	32.49	32.49	32.49	101.7	101.4	101.2	7.79	7.77	7.76	1.79	1.78	1.79	7	6.50
	09:57		Middle	4.0	18.90	18.90		7.07	7.07		32.49	32.49		100.9	100.9		7.73	7.73		1.79	1.79		6	
13/03/2019	08:40	Fine	Middle	4.0	19.70	19.70	19.75	7.25	7.25	7.27	32.70	32.70	32.70	97.9	98.2	98.1	7.37	7.39	7.38	3.56	3.53	3.57	9	9.50
	08:42		Middle	4.0	19.80	19.80		7.28	7.28		32.70	32.70		98.2	98.0		7.38	7.37		3.59	3.60		10	
15/03/2019	11:00	Cloudy	Middle	4.0	20.10	20.10	20.10	7.37	7.37	7.39	32.74	32.74	32.74	96.9	96.3	96.2	7.25	7.20	7.20	1.88	1.86	1.87	<2	<2
	11:02		Middle	4.0	20.10	20.10		7.40	7.40		32.73	32.73		95.5	96.2		7.14	7.20		1.86	1.87		<2	
18/03/2019	13:55	Fine	Middle	4.0	22.40	22.40	22.45	7.35	7.35	7.35	33.57	33.57	33.57	100.0	100.0	99.4	7.13	7.13	7.08	2.70	2.70	2.66	6	6.00
	13:57		Middle	4.0	22.50	22.50		7.35	7.35		33.56	33.56		98.9	98.8		7.02	7.04		2.62	2.62		6	
20/03/2019	16:05	Fine	Middle	4.0	22.60	22.60	22.65	7.79	7.79	7.80	32.94	32.94	32.95	93.5	94.1	94.1	6.67	6.69	6.70	3.38	3.40	3.39	6	6.00
	16:07		Middle	4.0	22.70	22.70		7.81	7.81		32.95	32.95		94.3	94.4		6.72	6.73		3.40	3.39		6	
22/03/2019	18:45	Cloudy	Middle	3.5	23.60	23.60	23.60	8.20	8.20	8.20	30.94	30.94	30.94	81.0	80.7	80.9	5.75	5.73	5.74	6.25	6.05	6.10	3	3.50
	18:40		Middle	3.5	23.60	23.60		8.20	8.20		30.94	30.94		80.9	81.1		5.74	5.75		6.09	6.00		4	
25/03/2019	08:15	Cloudy	Middle	4.0	20.50	20.50	20.50	7.35	7.35	7.35	33.09	33.09	33.10	92.4	92.8	92.3	6.85	6.88	6.85	6.21	6.21	6.21	10	9.50
	08:17		Middle	4.0	20.50	20.50		7.35	7.35		33.10	33.10		92.0	92.1		6.83	6.83		6.21	6.20		9	
27/03/2019	11:10	Fine	Middle	4.0	22.00	22.00	22.05	7.55	7.55	7.56	33.25	33.25	33.25	95.2	95.7	95.2	6.85	6.87	6.85	5.30	5.30	5.31	5	5.00
	11:12		Middle	4.0	22.10	22.10		7.56	7.56		33.24	33.24		94.9	94.9		6.84	6.84		5.31	5.32		5	
30/03/2019	07:50	Fine	Middle	4.0	22.50	22.50	22.55	7.62	7.62	7.64	32.92	32.92	32.92	95.7	95.8	95.6	6.84	6.84	6.83	6.81	6.82	6.82	9	8.50
	07:52		Middle	4.0	22.60	22.60		7.66	7.66		32.91	32.91		95.4	95.3		6.81	6.81		6.82	6.81		8	

Remarks:
Single underline denotes exceedance over Action Level.
Double underline denotes exceedance over Limit Level.



**Water Monitoring Result at Culvert J - Reference Station
Mid-Flood Tide**

Date	Time	Weather Condition	Sampling Depth		Water Temperature		pH		Salinity		DO Saturation		DO		Turbidity		Suspended Solids							
					°C		-		ppt		%		mg/L		NTU		mg/L							
			m	Value	Average	Value	Average	Value	Average	Value	Average	Value	Average	Value	Average	Value	Average	Value	Average					
01/03/2019	13:30	Cloudy	Middle	3.5	21.10	21.10	21.05	7.64	7.64	7.68	32.80	32.80	32.82	114.4	113.2	112.1	8.42	8.32	8.25	1.70	1.70	1.71	<2	<2
	13:32		Middle	3.5	21.00	21.00		7.72	7.72		32.84	32.84		110.7	110.2		8.14	8.11		1.71	1.72		<2	
04/03/2019	17:15	Cloudy	Middle	3.5	21.20	21.20	21.20	7.85	7.85	7.86	31.27	31.27	31.28	103.1	104.0	103.4	7.77	7.69	7.68	3.37	3.38	3.33	3	3.50
	17:17		Middle	3.5	21.20	21.20		7.86	7.86		31.28	31.28		103.3	103.0		7.63	7.61		3.26	3.29		4	
06/03/2019	16:30	Cloudy	Middle	3.5	20.60	20.60	20.60	7.49	7.49	7.51	29.31	29.31	29.31	98.0	98.0	98.0	7.47	7.41	7.43	8.55	8.62	8.62	12	12.50
	16:32		Middle	3.5	20.60	20.60		7.52	7.52		29.30	29.30		98.0	98.1		7.41	7.42		8.65	8.64		13	
08/03/2019	20:27	Cloudy	Middle	2.5	18.70	18.70	18.70	8.54	8.54	8.54	29.05	29.05	29.05	88.7	88.8	88.3	6.96	6.98	6.94	7.35	7.30	7.35	3	3.00
	20:28		Middle	2.5	18.70	18.70		8.54	8.54		29.05	29.05		88.0	87.7		6.92	6.89		7.48	7.25		3	
11/03/2019	09:50	Cloudy	Middle	3.5	19.00	19.00	19.00	7.03	7.03	7.05	32.43	32.43	32.43	98.2	98.1	97.6	7.52	7.51	7.47	1.78	1.78	1.78	6	6.50
	09:52		Middle	3.5	19.00	19.00		7.06	7.06		32.43	32.43		97.1	97.0		7.43	7.42		1.78	1.78		7	
13/03/2019	08:35	Fine	Middle	3.5	20.20	20.20	20.20	7.19	7.19	7.19	31.14	31.14	31.14	98.2	97.8	97.4	7.40	7.37	7.34	3.69	3.70	3.69	7	6.50
	08:37		Middle	3.5	20.20	20.20		7.19	7.19		31.14	31.14		96.5	96.9		7.27	7.30		3.68	3.69		6	
15/03/2019	10:55	Cloudy	Middle	3.5	20.10	20.10	20.10	7.26	7.26	7.30	29.64	29.64	29.64	95.3	95.1	94.1	7.25	7.24	7.16	3.93	3.99	3.98	3	3.00
	10:57		Middle	3.5	20.10	20.10		7.33	7.33		29.64	29.64		93.0	93.0		7.08	7.08		4.00	4.00		<2	
18/03/2019	13:50	Fine	Middle	3.5	22.70	22.70	22.85	7.26	7.26	7.27	31.41	31.41	31.41	98.4	97.5	96.9	7.05	6.98	6.93	3.15	3.17	3.12	6	5.50
	13:52		Middle	3.5	23.00	23.00		7.28	7.28		31.41	31.41		95.8	95.8		6.86	6.84		3.08	3.09		5	
20/03/2019	16:00	Fine	Middle	3.5	23.10	23.10	23.20	7.73	7.73	7.73	31.76	31.76	31.76	93.9	93.8	93.2	6.67	6.66	6.62	3.31	3.29	3.29	5	4.50
	16:02		Middle	3.5	23.30	23.30		7.73	7.73		31.76	31.76		92.7	92.4		6.58	6.58		3.28	3.27		4	
22/03/2019	18:57	Cloudy	Middle	3.0	23.40	23.40	23.40	8.24	8.24	8.24	30.90	30.90	30.90	82.1	82.3	63.9	5.85	5.85	5.87	5.04	5.02	5.05	7	6.50
	18:58		Middle	3.0	23.40	23.40		8.24	8.24		30.90	30.90		8.2	83.0		5.87	5.90		5.00	5.13		6	
25/03/2019	08:10	Cloudy	Middle	3.5	20.60	20.60	20.60	7.19	7.19	7.19	32.90	32.90	32.91	98.9	98.7	97.4	7.32	7.31	7.21	7.34	7.36	7.36	9	9.50
	08:12		Middle	3.5	20.60	20.60		7.19	7.19		32.91	32.91		95.7	96.1		7.09	7.12		7.37	7.38		10	
27/03/2019	11:05	Fine	Middle	3.5	22.40	22.40	22.50	7.47	7.47	7.48	33.14	33.14	33.14	102.3	101.8	101.0	7.30	7.27	7.20	4.58	4.60	4.62	4	4.00
	11:07		Middle	3.5	22.60	22.60		7.49	7.49		33.13	33.13		100.0	99.8		7.12	7.10		4.68	4.63		4	
30/03/2019	07:45	Fine	Middle	3.5	22.90	22.90	22.95	7.46	7.46	7.51	31.38	31.38	31.38	98.4	97.8	97.4	7.04	7.00	6.97	4.47	4.47	4.48	2	2.00
	07:47		Middle	3.5	23.00	23.00		7.56	7.56		31.38	31.38		96.7	96.5		6.92	6.90		4.48	4.48		2	

Remarks:
Single underline denotes exceedance over Action Level.
Double underline denotes exceedance over Limit Level.



**Water Monitoring Result at M5B - Central Colling Water Intake Group
Mid-Ebb Tide**

Date	Time	Weather Condition	Sampling Depth		Water Temperature			pH			Salinity		DO Saturation		DO		Turbidity		Suspended Solids					
					°C			-			ppt		%		mg/L		NTU		mg/L					
					Value	Average		Value	Average		Value	Average	Value	Average	Value	Average	Value	Average	Value	Average				
01/03/2019	22:14	Cloudy	Middle	3.5	20.20	20.20	20.20	8.31	8.31	8.31	31.82	31.82	31.82	91.1	90.3	90.9	6.84	6.78	6.82	2.47	2.49	2.48	<2	<2
	22:20		Middle	3.5	20.20	20.20		8.31	8.31		31.82	31.82		91.2	91.0		6.84	6.83		2.52	2.43		<2	
04/03/2019	23:15	Cloudy	Middle	3.5	19.80	19.80	19.80	8.30	8.30	8.30	30.44	30.44	30.44	83.8	84.4	84.8	6.39	6.44	6.47	4.49	4.14	4.32	4	4.50
	23:16		Middle	3.5	19.80	19.80		8.30	8.30		30.44	30.44		85.4	85.4		6.52	6.52		4.27	4.38		5	
06/03/2019	-	Amber Rainstorm Warning Signal	Middle	-	-	-	-	-	-	-	-	-	-	-	-	-	-	-	-	-	-	-	-	-
	-		Middle	-	-	-		-	-		-	-		-	-		-	-		-	-		-	
08/03/2019	14:30	Cloudy	Middle	4.0	19.00	19.00	19.00	7.22	7.22	7.22	32.62	32.62	32.62	101.5	102.5	102.2	7.77	7.84	7.82	1.93	1.97	1.97	<2	<2
	14:32		Middle	4.0	19.00	19.00		7.23	7.22		32.62	32.62		102.3	102.4		7.83	7.84		1.99	2.00		<2	
11/03/2019	13:50	Fine	Middle	4.0	20.60	20.60	20.65	7.17	7.17	7.18	32.84	32.84	32.84	98.2	98.7	98.5	7.27	7.30	7.28	2.94	2.90	2.91	4	3.50
	13:52		Middle	4.0	20.70	20.70		7.19	7.19		32.84	32.84		98.3	98.6		7.26	7.29		2.91	2.90		3	
13/03/2019	14:05	Fine	Middle	4.0	21.30	21.30	21.40	7.31	7.31	7.33	32.73	32.73	32.73	93.6	94.8	94.4	6.83	6.91	6.88	2.41	2.47	2.46	7	7.00
	14:07		Middle	4.0	21.50	21.50		7.34	7.34		32.73	32.73		94.3	94.7		6.87	6.90		2.48	2.48		7	
15/03/2019	20:16	Cloudy	Middle	3.0	19.80	19.80	19.80	8.35	8.35	8.35	32.28	32.28	32.28	86.7	87.4	87.5	6.54	6.60	6.60	2.74	2.72	2.71	<2	<2
	20:17		Middle	3.0	19.80	19.80		8.35	8.35		32.28	32.28		87.5	88.2		6.61	6.66		2.70	2.68		<2	
18/03/2019	20:15	Cloudy	Middle	3.5	21.20	21.20	21.20	8.13	8.13	8.13	32.59	32.59	32.59	83.7	83.3	83.5	6.14	6.10	6.12	2.36	2.15	2.24	4	4.00
	20:16		Middle	3.5	21.20	21.20		8.13	8.13		32.59	32.59		83.4	83.4		6.12	6.12		2.20	2.23		4	
20/03/2019	14:05	Cloudy	Middle	3.5	22.30	22.30	22.40	7.61	7.61	7.64	32.88	32.88	32.89	93.4	93.0	93.2	6.70	6.67	6.68	2.90	2.82	2.87	3	3.50
	14:07		Middle	3.5	22.50	22.50		7.66	7.66		32.89	32.89		93.0	93.4		6.67	6.68		2.87	2.88		4	
22/03/2019	12:05	Cloudy	Middle	4.0	22.60	22.60	22.70	7.49	7.49	7.51	32.27	32.27	32.27	96.1	96.2	95.6	6.88	6.88	6.83	4.29	4.29	4.24	4	4.50
	12:07		Middle	4.0	22.80	22.80		7.52	7.53		32.27	32.27		94.6	95.3		6.76	6.80		4.19	4.20		5	
25/03/2019	16:05	Fine	Middle	3.5	22.10	22.10	22.15	7.54	7.54	7.55	33.51	33.51	33.51	105.4	104.8	104.3	7.56	7.52	7.47	4.33	4.32	4.30	6	6.00
	16:07		Middle	3.5	22.20	22.20		7.55	7.55		33.51	33.51		103.6	103.2		7.41	7.39		4.27	4.29		6	
27/03/2019	18:10	Fine	Middle	3.5	22.30	22.30	22.40	7.62	7.62	7.62	33.41	33.41	33.41	94.6	94.7	94.2	6.75	6.76	6.72	3.45	3.47	3.46	2	2.00
	18:12		Middle	3.5	22.50	22.50		7.62	7.62		33.41	33.41		93.6	93.8		6.68	6.69		3.46	3.45		2	
29/03/2019	05:27	Cloudy	Middle	3.5	22.60	22.60	22.60	8.23	8.23	8.23	30.42	30.42	30.42	80.1	79.1	79.4	5.80	5.73	5.75	2.44	2.55	2.52	<2	<2
	05:28		Middle	3.5	22.60	22.60		8.23	8.23		30.42	30.42		78.9	79.3		5.72	5.74		2.49	2.60		<2	

Remarks:
Single underline denotes exceedance over Action Level.
Double underline denotes exceedance over Limit Level.



**Water Monitoring Result at Culvert J - Reference Station
Mid-Ebb Tide**

Date	Time	Weather Condition	Sampling Depth		Water Temperature			pH			Salinity		DO Saturation		DO		Turbidity		Suspended Solids					
					°C			-			ppt		%		mg/L		NTU		mg/L					
					Value	Average		Value	Average		Value	Average	Value	Average	Value	Average	Value	Average	Value	Average				
01/03/2019	22:27	Cloudy	Middle	3	20.30	20.30	20.30	8.37	8.37	8.37	27.67	27.67	28.17	85.0	84.9	85.5	6.53	6.52	6.56	5.36	5.21	5.40	4	4.50
	22:28		Middle	3	20.30	20.30		8.37	8.37		27.67	29.67		86.0	85.9		6.60	6.60		5.47	5.54		5	
04/03/2019	23:24	Cloudy	Middle	3	19.70	19.70	19.70	8.42	8.42	8.42	23.75	23.75	23.75	86.5	86.0	86.8	6.88	6.84	6.90	23.12	22.95	23.02	46	47.00
	23:25		Middle	3	19.70	19.70		8.42	8.42		23.75	23.75		86.6	87.9		6.88	6.99		23.08	22.93		48	
06/03/2019	-	Amber Rainstorm Warning Signal	Middle	-	-	-	-	-	-	-	-	-	-	-	-	-	-	-	-	-	-	-	-	
	-		Middle	-	-	-	-	-	-	-	-	-	-	-	-	-	-	-	-	-	-	-	-	
08/03/2019	14:25	Cloudy	Middle	4	19.00	19.00	19.00	7.16	7.16	7.18	32.58	32.58	33.08	103.5	103.5	103.0	7.92	7.92	7.88	1.79	1.78	1.78	<2	<2
	14:27		Middle	4	19.00	19.00		7.19	7.19		33.58	33.58		103.0	102.0		7.89	7.80		1.78	1.78		<2	
11/03/2019	13:45	Fine	Middle	4	21.10	21.10	21.15	7.12	7.12	7.14	32.81	32.81	32.82	95.5	95.4	94.9	7.00	6.99	6.96	2.75	2.75	2.74	4	4.50
	13:47		Middle	4	21.20	21.20		7.15	7.15		32.83	32.83		94.2	94.4		6.91	6.92		2.75	2.72		5	
13/03/2019	14:00	Fine	Middle	4	22.30	22.30	22.45	7.32	7.32	7.32	30.17	30.17	30.17	91.3	90.4	90.7	6.65	6.50	6.58	4.38	4.47	4.43	9	9.50
	14:02		Middle	4	22.60	22.60		7.32	7.32		30.16	30.16		90.5	90.6		6.58	6.58		4.46	4.41		10	
15/03/2019	20:25	Cloudy	Middle	3	19.90	19.90	19.90	8.39	8.39	8.39	27.94	27.94	27.94	79.3	79.1	79.1	6.13	6.12	6.12	8.02	8.05	7.98	6	5.50
	20:26		Middle	3	19.90	19.90		8.39	8.39		27.94	27.94		79.0	79.0		6.11	6.11		7.93	7.90		5	
18/03/2019	20:23	Cloudy	Middle	3	21.20	21.20	21.20	8.20	8.20	8.20	30.80	30.80	30.80	81.5	81.3	81.0	6.04	6.02	6.01	2.75	2.71	2.70	5	4.50
	20:24		Middle	3	21.20	21.20		8.20	8.20		30.80	30.80		81.2	80.1		6.02	5.94		2.69	2.66		4	
20/03/2019	14:00	Cloudy	Middle	4	22.80	22.80	22.85	7.58	7.58	7.59	29.28	29.28	29.27	90.3	90.0	89.4	6.54	6.52	6.47	5.19	5.16	5.17	5	4.50
	14:02		Middle	4	22.90	22.90		7.59	7.59		29.26	29.26		88.6	88.5		6.40	6.40		5.17	5.17		4	
22/03/2019	12:00	Cloudy	Middle	4	23.40	23.40	23.55	7.14	7.14	7.17	31.43	31.43	31.42	96.9	96.0	95.2	6.86	6.80	6.74	4.27	4.18	4.23	2	2.50
	12:02		Middle	4	23.70	23.70		7.19	7.19		31.40	31.40		94.1	93.8		6.65	6.63		4.19	4.26		3	
25/03/2019	16:00	Fine	Middle	4	21.70	21.70	21.75	7.58	7.58	7.59	32.92	32.92	32.92	92.9	92.9	92.5	6.73	6.73	6.70	6.17	6.17	6.17	8	7.50
	16:02		Middle	4	21.80	21.80		7.59	7.59		32.92	32.92		92.2	92.1		6.67	6.67		6.16	6.17		7	
27/03/2019	18:05	Fine	Middle	4	23.10	23.10	23.25	7.58	7.58	7.59	33.44	33.44	33.45	99.6	99.7	98.5	7.01	7.01	6.92	3.29	3.29	3.28	<2	<2
	18:07		Middle	4	23.40	23.40		7.59	7.59		33.45	33.45		97.7	97.0		6.85	6.79		3.26	3.27		<2	
29/03/2019	05:36	Cloudy	Middle	3	22.70	22.70	22.70	8.28	8.28	8.28	26.94	26.94	26.94	77.9	78.0	78.5	5.76	5.77	5.81	3.11	3.14	3.14	<2	<2
	05:37		Middle	3	22.70	22.70		8.28	8.28		26.94	26.94		78.8	79.4		5.82	5.87		3.15	3.17		<2	

Remarks:
Single underline denotes exceedance over Action Level.
Double underline denotes exceedance over Limit Level.



**Water Monitoring Result at M5B - Central Cooling Water Intake Group
Mid-Flood Tide**

Date	Time	Weather Condition	Sampling Depth m	Water Temperature °C		pH		Salinity ppt		DO Saturation %		DO mg/L		Turbidity NTU		Suspended Solids mg/L								
				Value	Average	Value	Average	Value	Average	Value	Average	Value	Average	Value	Average	Value	Average							
1/4/19	16:36	Cloudy	Middle	3.5	21.70	21.70	21.70	7.90	7.90	7.91	34.14	34.14	34.14	94.2	94.2	94.4	6.79	6.79	6.80	5.04	5.05	5.05	3	3.50
	16:38		Middle	3.5	21.70	21.70	21.70	7.92	7.92	7.91	34.14	34.14	34.14	94.4	94.6	94.4	6.81	6.82	6.80	5.07	5.04	5.05	4	
3/4/19	17:45	Fine	Middle	4.0	23.50	23.50	23.55	7.76	7.76	7.76	33.93	33.93	33.93	95.2	95.6	95.1	6.66	6.68	6.64	2.98	2.98	2.98	4	4.00
	17:47		Middle	4.0	23.60	23.60	23.55	7.76	7.76	7.76	33.92	33.92	33.93	94.6	95.0	95.1	6.60	6.63	6.64	2.99	2.97	2.98	4	
6/4/19	6:00	Foggy	Middle	3.0	22.70	22.70	22.70	8.38	8.38	8.38	32.07	32.07	32.07	79.4	80.2	80.1	5.69	5.75	5.74	2.61	2.58	2.60	3	3.00
	6:01		Middle	3.0	22.70	22.70	22.70	8.38	8.38	8.38	32.07	32.07	32.07	80.2	80.7	80.1	5.75	5.78	5.74	2.56	2.63	2.60	3	
8/4/19	5:06	Cloudy	Middle	3.0	24.10	24.10	24.10	8.33	8.33	8.33	31.08	31.08	31.08	77.3	77.0	77.1	5.44	5.41	5.42	2.74	2.45	2.47	2	2.50
	5:07		Middle	3.0	24.10	24.10	24.10	8.33	8.33	8.33	31.08	31.08	31.08	76.9	77.1	77.1	5.41	5.42	5.42	2.42	2.28	2.47	3	
10/4/19	8:40	Fine	Middle	3.0	24.40	24.40	24.45	8.13	8.13	8.14	31.45	31.40	31.41	91.7	90.9	90.5	6.40	6.34	6.32	1.12	1.13	1.14	<2	<2
	8:42		Middle	3.0	24.50	24.50	24.45	8.14	8.14	8.14	31.40	31.40	31.41	90.0	89.5	90.5	6.28	6.24	6.32	1.14	1.16	1.14	<2	
12/4/19	8:50	Cloudy	Middle	4.0	23.40	23.40	23.45	7.24	7.24	7.27	31.51	31.51	31.51	93.2	92.6	92.9	6.61	6.57	6.59	1.83	1.86	1.86	2	2.00
	8:52		Middle	4.0	23.50	23.50	23.45	7.29	7.29	7.27	31.51	31.51	31.51	92.4	93.3	92.9	6.56	6.62	6.59	1.87	1.87	1.86	2	
15/4/19	13:35	Cloudy	Middle	4.0	22.80	22.80	22.80	7.29	7.29	7.30	32.51	32.51	32.51	93.8	94.2	94.0	6.69	6.72	6.71	2.40	2.40	2.41	12	11.50
	13:37		Middle	4.0	22.80	22.80	22.80	7.31	7.31	7.30	32.51	32.51	32.51	93.6	94.3	94.0	6.69	6.72	6.71	2.41	2.41	2.41	11	
17/4/19	15:20	Fine	Middle	3.5	24.50	24.50	24.55	7.56	7.56	7.56	32.01	32.01	32.01	93.9	94.0	93.6	6.51	6.52	6.49	3.29	3.29	3.29	4	4.00
	15:22		Middle	3.5	24.60	24.60	24.55	7.56	7.56	7.56	32.01	32.01	32.01	93.0	93.5	93.6	6.45	6.48	6.49	3.28	3.30	3.29	4	
19/4/19	-	Amber Rainstorm Warning	Middle	-	-	-	-	-	-	-	-	-	-	-	-	-	-	-	-	-	-	-	-	
	-		Middle	-	-	-	-	-	-	-	-	-	-	-	-	-	-	-	-	-	-	-	-	-
23/4/19	7:55	Fine	Middle	4.0	24.80	24.80	24.85	7.47	7.47	7.48	29.49	29.49	29.49	87.5	87.0	87.7	6.11	6.06	6.12	3.10	3.08	3.10	3	3.00
	7:57		Middle	4.0	24.90	24.90	24.85	7.49	7.49	7.48	29.49	29.49	29.49	88.0	88.1	87.7	6.16	6.16	6.12	3.11	3.11	3.10	3	
25/4/19	8:50	Fine	Middle	4.0	25.50	25.50	25.55	7.36	7.36	7.36	29.76	29.76	29.76	91.5	91.8	92.6	6.32	6.34	6.40	2.83	2.84	2.89	5	4.50
	8:52		Middle	4.0	25.60	25.60	25.55	7.35	7.35	7.36	29.76	29.76	29.76	93.1	94.1	92.6	6.43	6.50	6.40	2.94	2.96	2.89	4	
27/4/19	19:25	Cloudy	Middle	3.0	22.80	22.80	22.80	7.99	7.99	7.99	31.74	31.74	31.74	87.7	89.7	88.5	5.87	6.05	5.93	2.36	2.24	2.22	3	3.50
	19:26		Middle	3.0	22.80	22.80	22.80	7.99	7.99	7.99	31.74	31.74	31.74	88.5	87.9	88.5	5.93	5.88	5.93	2.19	2.09	2.22	4	
30/4/19	14:35	Cloudy	Middle	4.0	25.90	25.90	25.95	7.14	7.14	7.15	29.66	29.66	29.66	94.9	95.2	95.1	6.52	6.53	6.52	1.97	1.99	1.97	3	3.00
	14:37		Middle	4.0	26.00	26.00	25.95	7.16	7.16	7.15	29.65	29.65	29.66	95.1	95.1	95.1	6.52	6.52	6.52	1.99	1.94	1.97	3	

Remarks:
Single underline denotes exceedance over Action Level.
Double underline denotes exceedance over Limit Level.



**Water Monitoring Result at Culvert J - Reference Station
Mid-Flood Tide**

Date	Time	Weather Condition	Sampling Depth m	Water Temperature °C		pH		Salinity ppt		DO Saturation %		DO mg/L		Turbidity NTU		Suspended Solids mg/L								
				Value	Average	Value	Average	Value	Average	Value	Average	Value	Average	Value	Average	Value	Average							
1/4/19	16:30	Cloudy	Middle	3.5	21.90	21.90	21.90	7.83	7.83	7.85	34.15	34.15	34.16	95.7	95.1	95.2	6.87	6.82	6.84	4.03	4.08	4.08	4	3.50
	16:32		Middle	3.5	21.90	21.90	21.90	7.87	7.87	7.85	34.16	34.16	34.16	95.1	95.0	95.2	6.83	6.82	6.84	4.10	4.12	4.08	3	
3/4/19	17:40	Fine	Middle	3.5	22.80	22.80	22.85	7.79	7.79	7.80	33.89	33.89	33.90	91.0	90.9	90.5	6.43	6.42	6.40	3.41	3.41	3.42	6	6.50
	17:42		Middle	3.5	22.90	22.90	22.85	7.80	7.80	7.80	33.90	33.90	33.90	90.3	89.9	90.5	6.38	6.35	6.40	3.43	3.44	3.42	7	
6/4/19	6:08	Foggy	Middle	2.5	22.70	22.70	22.70	8.40	8.40	8.40	31.20	31.20	31.20	78.0	78.5	78.8	5.62	5.66	5.68	3.17	3.44	3.37	4	3.50
	6:09		Middle	2.5	22.70	22.70	22.70	8.40	8.40	8.40	31.20	31.20	31.20	79.4	79.2	78.8	5.72	5.71	5.68	3.65	3.23	3.37	3	
8/4/19	5:14	Cloudy	Middle	2.5	24.10	24.10	24.10	8.38	8.38	8.38	30.12	30.12	30.12	76.4	76.7	76.8	5.40	5.42	5.42	3.56	3.37	3.37	3	3.00
	5:15		Middle	2.5	24.10	24.10	24.10	8.38	8.38	8.38	30.12	30.12	30.12	76.9	77.0	76.8	5.42	5.45	5.42	3.30	3.24	3.37	<2	
10/4/19	8:30	Fine	Middle	3.0	24.70	24.70	24.85	8.09	8.09	8.10	30.81	30.91	30.89	93.1	92.3	92.3	6.47	6.41	6.41	2.21	2.21	2.21	3	3.00
	8:32		Middle	3.0	25.00	25.00	24.85	8.11	8.11	8.10	30.92	30.92	30.89	91.8	92.0	92.3	6.38	6.38	6.41	2.21	2.22	2.21	3	
12/4/19	8:45	Cloudy	Middle	3.5	23.70	23.70	23.70	7.19	7.19	7.20	29.94	29.94	29.94	87.6	87.8	87.5	6.25	6.26	6.24	2.31	2.29	2.29	2	2.50
	8:47		Middle	3.5	23.70	23.70	23.70	7.20	7.20	7.20	29.93	29.93	29.94	87.1	87.3	87.5	6.21	6.23	6.24	2.28	2.28	2.29	3	
15/4/19	13:30	Cloudy	Middle	3.5	23.00	23.00	23.05	7.20	7.20	7.21	31.87	31.87	31.87	93.3	93.5	93.4	6.65	6.66	6.66	2.35	2.35	2.33	3	3.00
	13:32		Middle	3.5	23.10	23.10	23.05	7.21	7.21	7.21	31.87	31.87	31.87	93.4	93.5	93.4	6.65	6.66	6.66	2.31	2.30	2.33	3	
17/4/19	15:15	Fine	Middle	3.0	25.30	25.30	25.35	7.53	7.53	7.54	31.70	31.70	31.70	87.9	88.0	87.3	6.03	6.04	5.99	3.35	3.37	3.37	<2	<2
	15:17		Middle	3.0	25.40	25.40	25.35	7.56	7.54	7.54	31.70	31.70	31.70	86.5	86.7	87.3	5.93	5.94	5.99	3.38	3.37	3.37	<2	
19/4/19	-	Amber Rainstorm Warning	Middle	-	-	-	-	-	-	-	-	-	-	-	-	-	-	-	-	-	-	-	-	
	-		Middle	-	-	-	-	-	-	-	-	-	-	-	-	-	-	-	-	-	-	-	-	-
23/4/19	7:50	Fine	Middle	3.5	24.90	24.90	24.95	7.48	7.48	7.48	26.33	26.33	26.33	83.0	83.0	82.8	5.91	5.91	5.89	9.55	9.55	9.55	3	3.00
	7:52		Middle	3.5	25.00	25.00	24.95	7.48	7.48	7.48	26.33	26.33	26.33	82.6	82.5	82.8	5.88	5.87	5.89	9.54	9.54	9.55	3	
25/4/19	8:45	Fine	Middle	3.5	26.00	26.00	26.05	7.26	7.26	7.26	29.04	29.04	29.04	87.3	88.2	87.4	6.01	6.06	6.01	1.70	1.69	1.69	4	3.50
	8:47		Middle	3.5	26.10	26.10	26.05	7.26	7.26	7.26	29.03	29.03	29.04	86.5	87.6	87.4	5.94	6.02	6.01	1.69	1.69	1.69	3	
27/4/19	19:34	Cloudy	Middle	2.5	22.90	22.90	22.90	8.03	8.03	8.03	27.61	27.61	27.61	84.2	86.1	85.5	5.77	5.93	5.86	1.88	1.96	1.87	5	5.00
	19:35		Middle	2.5	22.90	22.90	22.90	8.03	8.03	8.03	27.61	27.61	27.61	84.5	87.0	85.5	5.79	5.95	5.86	1.92	1.73	1.87	5	
30/4/19	14:30	Cloudy	Middle	3.5	25.80	25.80	25.85	7.29	7.29	7.31	28.42	28.42	28.42	92.6	92.7	92.8	6.41	6.42	6.43	1.95	1.99	1.97	5	5.00
	14:32		Middle	3.5	25.90	25.90	25.85	7.33	7.33	7.31	28.42	28.42	28.42	92.9	92.9	92.8	6.44	6.43	6.43	1.96	1.97	1.97	5	

Remarks:
Single underline denotes exceedance over Action Level.
Double underline denotes exceedance over Limit Level.



**Water Monitoring Result at M5B - Central Colling Water Intake Group
Mid-Ebb Tide**

Date	Time	Weather Condition	Sampling Depth		Water Temperature			pH			Salinity			DO Saturation		DO		Turbidity		Suspended Solids				
					°C		-		ppt		%		mg/L		NTU		mg/L							
					Value	Average	Value	Average	Value	Average	Value	Average	Value	Average	Value	Average	Value	Average	Value	Average				
1/4/19	19:15	Cloudy	Middle	3.5	21.20	21.20	21.20	8.44	8.44	8.44	33.05	33.05	33.05	86.7	86.3	86.8	6.35	6.32	6.35	6.89	6.87	6.69	5	5.00
	19:16		Middle	3.5	21.20	21.20		8.44	8.44		33.05	33.05		87.2	87.0		6.35	6.37		6.50	6.48		5	
3/4/19	11:00	Fine	Middle	4.0	22.90	22.90	22.90	7.60	7.60	7.62	34.00	34.00	34.00	94.5	94.6	95.1	6.67	6.68	6.71	2.86	2.91	2.92	3	3.00
	11:02		Middle	4.0	22.90	22.90		7.64	7.64		34.00	34.00		95.5	95.6		6.74	6.74		2.95	2.94		3	
6/4/19	13:01	Fine	Middle	3.5	24.70	24.70	24.85	6.87	6.87	6.93	32.80	32.80	32.80	86.3	84.5	85.4	5.94	5.81	5.87	1.70	1.70	1.68	3	3.50
	13:03		Middle	3.5	25.00	25.00		6.99	6.99		32.79	32.79		85.1	85.7		5.85	5.89		1.68	1.63		4	
8/4/19	15:15	Fine	Middle	3.0	25.30	25.30	25.30	8.10	8.10	8.10	32.13	32.13	32.13	77.7	81.9	81.2	5.32	5.60	5.55	3.06	3.06	3.06	2	3.00
	15:17		Middle	3.0	25.30	25.30		8.10	8.10		32.12	32.12		83.2	81.9		5.69	5.60		3.06	3.06		4	
10/4/19	14:45	Fine	Middle	3.0	27.30	27.30	27.60	8.14	8.14	8.15	30.99	30.99	30.99	99.2	99.4	99.4	6.58	6.59	6.59	3.06	3.00	2.98	<2	<2
	14:47		Middle	3.0	27.90	27.90		8.15	8.15		30.99	30.99		99.3	99.8		6.58	6.60		2.95	2.91		<2	
12/4/19	16:10	Cloudy	Middle	4.0	22.70	22.70	22.65	7.35	7.35	7.33	32.67	32.67	32.67	97.6	97.3	97.6	6.98	6.95	6.98	2.13	2.13	2.14	<2	<2
	16:12		Middle	4.0	22.60	22.60		7.31	7.31		32.66	32.66		97.6	97.7		6.98	6.99		2.14	2.16		<2	
15/4/19	19:15	Cloudy	Middle	3.5	22.10	22.10	22.10	7.68	7.68	7.68	33.47	33.47	33.47	92.5	91.7	91.5	6.65	6.59	6.58	3.48	3.50	3.48	4	4.50
	19:16		Middle	3.5	22.10	22.10		7.68	7.68		33.47	33.48		91.1	90.8		6.54	6.53		3.64	3.31		5	
17/4/19	10:35	Fine	Middle	3.5	23.80	23.80	23.85	7.15	7.15	7.18	32.48	32.48	32.48	92.3	92.7	93.0	6.48	6.49	6.51	3.72	3.75	3.75	<2	<2
	10:37		Middle	3.5	23.90	23.90		7.20	7.20		32.48	32.48		93.4	93.7		6.53	6.55		3.76	3.76		<2	
19/4/19	11:20	Fine	Middle	3.5	24.40	24.40	24.35	7.22	7.22	7.23	31.81	31.81	31.85	93.8	93.0	92.8	6.55	6.48	6.47	8.24	8.19	8.21	6	6.00
	11:22		Middle	3.5	24.30	24.30		7.23	7.23		31.89	31.89		92.3	92.0		6.43	6.41		8.19	8.20		6	
23/4/19	14:17	Fine	Middle	3.0	25.60	25.60	25.75	8.11	8.11	8.12	29.64	29.64	29.63	94.7	94.1	93.1	6.53	6.48	6.41	3.80	3.74	3.79	3	3.50
	14:19		Middle	3.0	25.90	25.90		8.13	8.13		29.62	29.62		92.3	91.1		6.36	6.27		3.75	3.87		4	
25/4/19	15:55	Fine	Middle	3.5	26.90	26.90	27.00	7.11	7.11	7.14	29.61	29.61	29.61	94.6	94.2	95.1	6.39	6.38	6.41	2.90	2.90	2.92	4	4.50
	15:57		Middle	3.5	27.10	27.10		7.17	7.17		29.61	29.61		95.8	95.7		6.44	6.44		2.94	2.95		5	
27/4/19	7:35	Cloudy	Middle	3.5	25.00	25.00	25.05	7.47	7.47	7.49	30.73	30.73	30.73	95.9	95.8	95.7	6.65	6.64	6.63	2.27	2.22	2.22	3	3.00
	7:37		Middle	3.5	25.10	25.10		7.50	7.50		30.73	30.73		95.6	95.6		6.62	6.62		2.21	2.18		3	
30/4/19	19:28	Cloudy	Middle	3.5	25.00	25.00	25.00	8.08	8.08	8.08	29.62	29.62	29.62	88.8	91.2	89.6	6.21	6.38	6.27	2.56	2.45	2.46	<2	2.00
	19:29		Middle	3.5	25.00	25.00		8.08	8.08		29.62	29.62		89.0	89.3		6.23	6.25		2.44	2.40		2	

Remarks:
Single underline denotes exceedance over Action Level.
Double underline denotes exceedance over Limit Level.



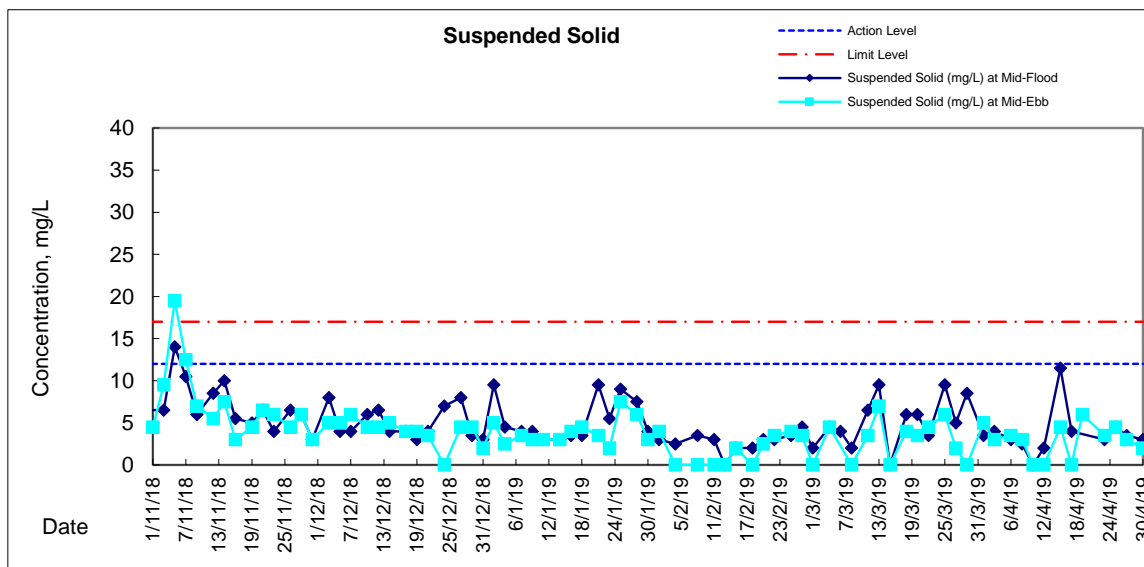
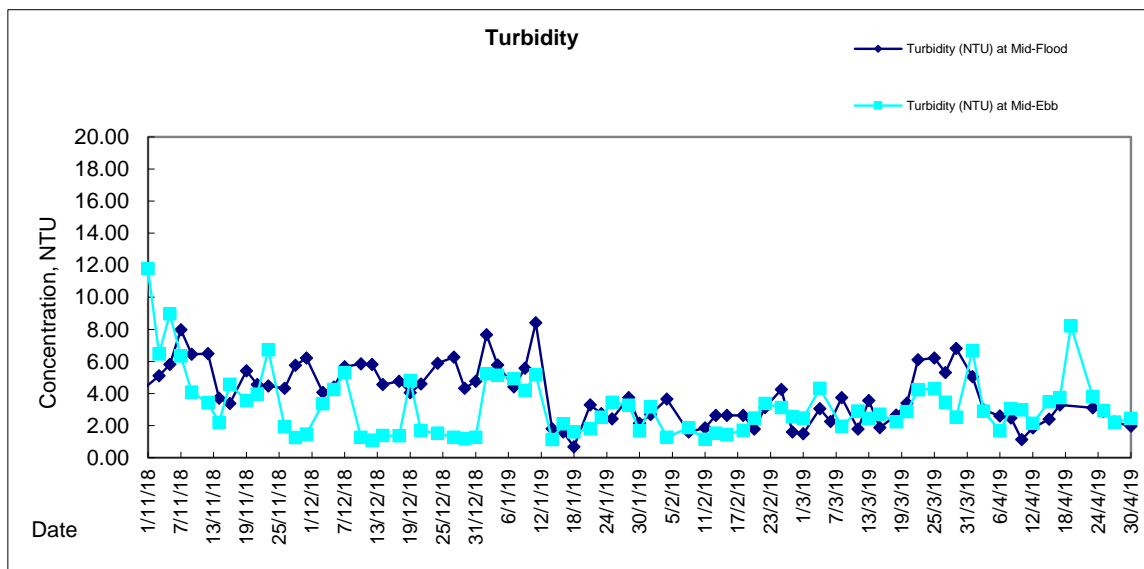
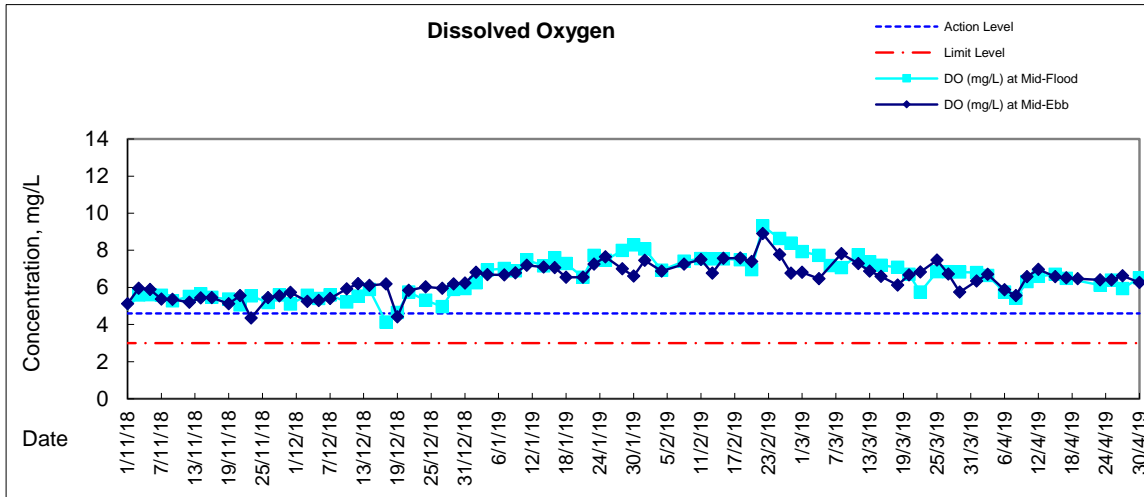
**Water Monitoring Result at Culvert J - Reference Station
Mid-Ebb Tide**

Date	Time	Weather Condition	Sampling Depth		Water Temperature		pH		Salinity		DO Saturation		DO		Turbidity		Suspended Solids							
					°C		-		ppt		%		mg/L		NTU		mg/L							
					Value	Average	Value	Average	Value	Average	Value	Average	Value	Average	Value	Average	Value	Average						
1/4/19	19:23	Cloudy	Middle	4	21.20	21.20	21.20	8.47	8.47	8.47	31.87	31.87	31.87	85.5	84.7	85.1	6.30	6.24	6.27	5.47	5.40	5.42	4	4.00
	19:24		Middle	4	21.20	21.20		8.47	8.47		31.87	31.87		85.2	85.0		6.28	6.26		5.41	5.38		4	
3/4/19	10:55	Fine	Middle	4	23.20	23.20	23.23	7.44	7.44	7.49	31.34	31.34	31.34	94.4	93.9	93.7	6.73	6.70	6.67	4.78	4.77	4.77	3	3.00
	10:57		Middle	4	23.30	23.20		7.53	7.53		31.33	31.33		93.0	93.3		6.62	6.64		4.76	4.76		3	
6/4/19	12:56	Fine	Middle	4	26.00	26.00	26.00	6.73	6.73	6.79	26.58	26.58	26.44	77.8	77.6	76.1	5.45	5.43	5.33	10.94	10.65	10.69	10	9.50
	12:58		Middle	4	26.00	26.00		6.84	6.84		26.29	26.29		75.1	74.0		5.25	5.17		10.59	10.58		9	
8/4/19	15:00	Fine	Middle	3	26.20	26.20	26.50	8.05	8.05	8.05	30.10	30.10	30.10	48.7	49.4	49.8	3.29	3.36	3.37	4.84	4.84	4.84	4	4.50
	15:02		Middle	3	26.80	26.80		8.05	8.05		30.10	30.10		50.4	50.6		3.40	3.41		4.84	4.84		5	
10/4/19	14:40	Fine	Middle	3	26.40	26.40	26.50	8.13	8.13	8.13	29.94	29.94	29.94	89.0	89.2	87.1	6.05	6.06	5.98	3.60	3.80	3.74	2	2.00
	14:42		Middle	3	26.60	26.60		8.13	8.13		29.94	29.94		85.1	85.1		6.01	5.78		3.80	3.75		2	
12/4/19	16:05	Cloudy	Middle	4	22.50	22.50	22.50	7.13	7.13	7.14	28.17	28.17	28.17	93.7	92.8	93.4	6.89	6.82	6.87	9.41	9.41	9.41	2	2.50
	16:07		Middle	4	22.50	22.50		7.14	7.14		28.17	28.17		93.5	93.5		6.88	6.88		9.41	9.42		3	
15/4/19	19:27	Cloudy	Middle	3	22.10	22.10	22.10	7.73	7.73	7.73	32.37	32.37	32.37	88.0	89.9	88.7	6.37	6.51	6.42	5.27	5.21	5.20	5	4.50
	19:28		Middle	3	22.10	22.10		7.73	7.73		32.37	32.37		88.4	88.5		6.40	6.41		5.17	5.14		4	
17/4/19	10:30	Fine	Middle	4	24.20	24.20	24.25	7.09	7.09	7.10	29.97	29.97	29.97	96.5	95.7	95.9	6.81	6.76	6.77	5.47	5.46	5.46	<2	<2
	10:32		Middle	4	24.30	24.30		7.11	7.11		29.97	29.97		95.7	95.7		6.75	6.75		5.47	5.45		<2	
19/4/19	11:15	Fine	Middle	4	24.80	24.80	24.85	7.08	7.08	7.09	30.32	30.32	30.32	95.5	95.8	95.4	6.66	6.68	6.64	5.20	5.10	5.16	4	3.50
	11:17		Middle	4	24.90	24.90		7.09	7.09		30.31	30.31		95.0	95.1		6.61	6.62		5.16	5.17		3	
23/4/19	14:10	Fine	Middle	3	27.80	27.80	27.30	8.03	8.03	8.05	26.83	26.83	26.82	92.9	92.7	91.3	6.41	6.40	6.29	5.64	5.64	5.63	5	5.50
	14:12		Middle	3	26.80	26.80		8.07	8.07		26.80	26.80		90.0	89.4		6.20	6.16		5.65	5.57		6	
25/4/19	15:50	Fine	Middle	4	27.40	27.40	27.55	7.02	7.02	7.03	26.67	26.67	26.66	90.5	90.1	90.3	6.14	6.11	6.12	4.73	4.72	4.70	4	4.00
	15:52		Middle	4	27.70	27.70		7.04	7.04		26.64	26.64		90.2	90.4		6.11	6.12		4.68	4.65		4	
27/4/19	7:30	Cloudy	Middle	4	25.60	25.60	25.65	7.43	7.43	7.43	28.75	28.75	28.76	92.8	92.3	92.5	6.44	6.41	6.42	2.40	2.40	2.42	3	3.00
	7:32		Middle	4	25.70	25.70		7.42	7.42		28.77	28.77		92.4	92.5		6.41	6.42		2.49	2.40		3	
30/4/19	19:34	Cloudy	Middle	3	25.00	25.00	25.00	8.12	8.12	8.12	27.52	27.52	27.52	84.3	84.4	86.1	5.96	5.97	6.08	4.97	4.94	4.87	5	4.50
	19:35		Middle	3	25.00	25.00		8.12	8.12		27.52	27.52		87.4	88.2		6.17	6.23		4.91	4.65		4	

Remarks:
Single underline denotes exceedance over Action Level.
Double underline denotes exceedance over Limit Level.



Graphic Presentation of Water Quality Result of M5B - Central Cooling Water Intake Groups





Graphic Presentation of Water Quality Result of Culvert J - Reference Station

